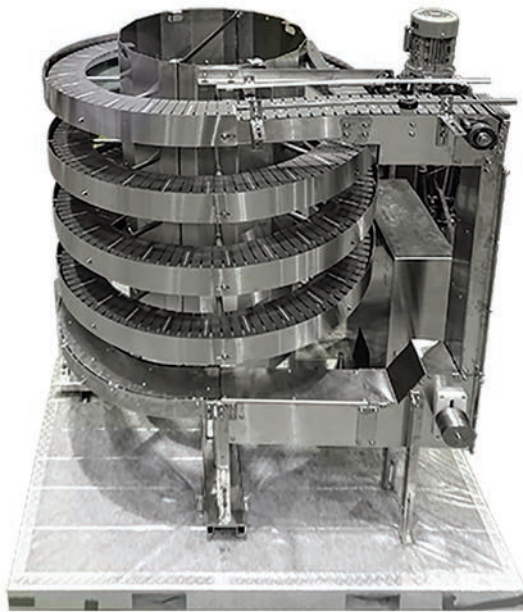


Vertical Conveying Solutions



Nercon's bi-directional [Spirex™](#) spiral conveyor provides a compact solution to elevate, or lower, a variety of products in a production line. The system gently carries products between floors or machines, or over aisles; occupying minimal floor space.

Designed with a uniform slope and a continuously moving tabletop chain, the Spirex™ conveyor ensures smooth operation, without disturbing the product, making it ideal for fragile products that cannot handle impact or gripping.

FEATURES

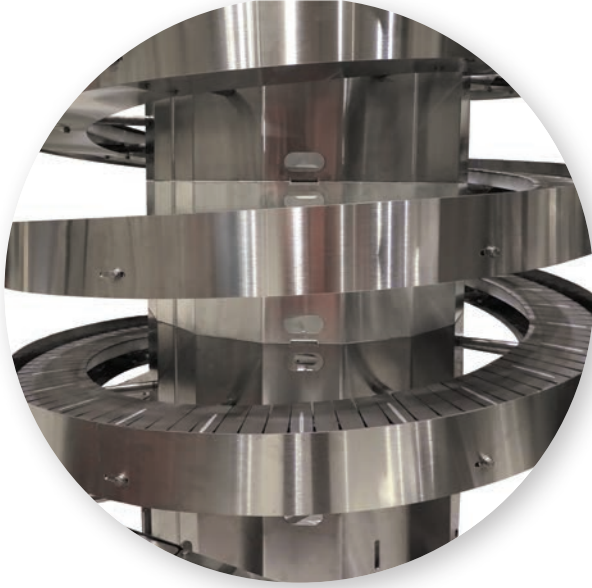
- Configured in a variety of in-feed and discharge height combinations
- Multiple slope angles and chain widths
- Reduced footprint
- No changeover needed

INDUSTRY SEGMENTS

- Snack Food & Bakery
- Packaged Foods
- Meat & Poultry
- Beverage
- Confectionery & Candy
- Dairy Food
- Produce
- Frozen Foods
- Health & Beauty
- Pharmaceuticals

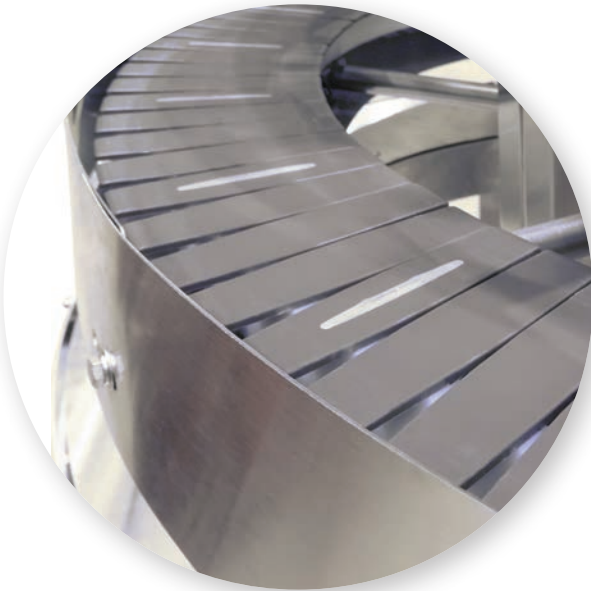
APPLICATION TYPES

- Bags
- Bottles
- Cans
- Cartons
- Cases
- Pouches
- Pucks
- Trays



Spirex™ Design Features

- Low friction chain design allows for longer chain pulls with smaller HP motors, saving costs on electricity consumption
- Formed tube center support is cleaner and makes future modifications easier
- Modular design makes it easy to modify



For more information and videos about Nercon's conveyor systems visit our website: www.nerconconveyors.com



Subscribe to Nercon's Blog
www.nerconconveyors.com

Made in
the U.S.A. 



600 S. Commercial Street | Neenah WI 54956
toll free 844-293-2814 | www.nerconconveyors.com

© 2018 Nercon, Inc. All rights reserved. 11/18 000 SELL-SPIREX